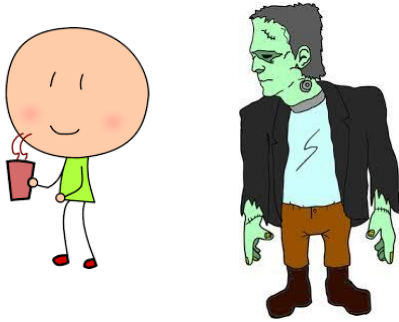
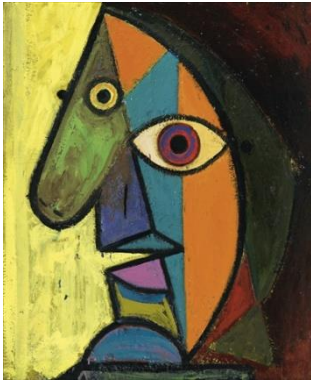


EE123/BME123: Bioelectricity

For more detail, see <http://www.ece.tufts.edu/ee/123/> or e-mail joel.grodstein@tufts.edu



Measure your body's electric fields and find out if you're alive, dead or in-between!¹



Learn what bioelectricity is, and how it helps compute where our eyes wind up on our face²



Learn about the bioelectricity that makes your heart pump, your brain think, and is launching numerous startup electroceutical companies³



Learn about the planarian – a worm that is practically immortal⁴ and has traveled on the International Space Station to reproduce⁴

1. Hopefully the outcome is not in doubt.
2. The Allen Discovery Center at Tufts has successfully found substantial evidence for a bioelectrical role in growth, especially in planaria and tadpoles
3. See, e.g., <https://www.actionpotentialvc.com/about.aspx>
4. Really!